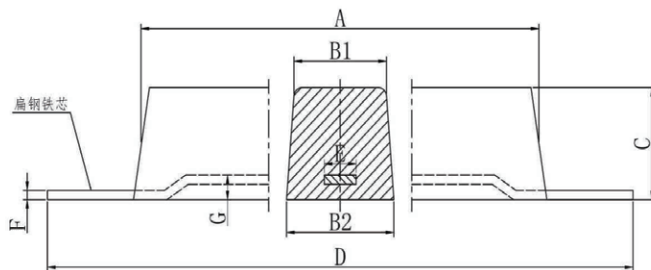


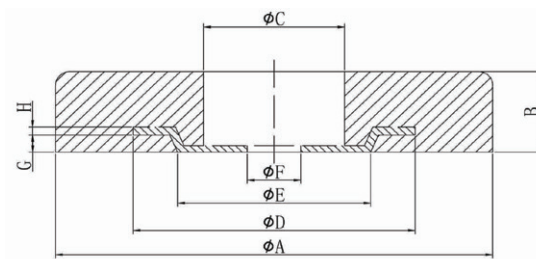
牺牲阳极

海水冷却水系统用长条铝阳极



型号	规格 / mm	铁脚尺寸 / mm				净重 /kg	毛重 /kg
	A X (B1+B2) X C	D	E	F	G		
YX-AL-E-1	1200X(200+800)X150	1400	70	10	10	114.2	121.7
YX-AL-E-2	800X(200+280)X150	1000	60	8	10	76.6	80.2
YX-AL-E-3	1000X(115+135)X130	1200	50	6	10	42.9	45.6
YX-AL-E-4	500X(115+135)X130	620	50	6	10	21.4	22.8
YX-AL-E-5	1000X(80+100)X80	1200	30	4	8	19	20
YX-AL-E-6	500X(105+135)X100	620	40	4	10	15.9	16.6
YX-AL-E-7	500X(80+100)X80	620	30	4	8	9.5	10
YX-AL-E-8	400X(110+120)X50	500	35	3	6	6	6.3
YX-AL-E-9	300X(140+160)X40	360	60	3	6	4.6	5
YX-AL-E-10	200X(90+110)X40	250	30	3	6	2	2.15

◆ 海水冷却水系统用圆盘状铝阳极



型号	规格 / mm		铁脚尺寸 / mm					净重 /kg	毛重 /kg
	A × B	C	D	E	F	H	G		
YX-AL-E-11	300×60	40	80	50	12	4	8	10.7	10.8
YX-AL-E-12	360×40	50	100	70	14	4	6	10.3	10.5
YX-AL-E-13	300×40	40	80	50	12	4	6	7.1	7.2
YX-AL-E-14	200×50	35	75	45	10	4	6	3.8	3.9
YX-AL-E-15	180×50	35	75	45	10	4	6	3.0	3.1
YX-AL-E-16	120×100	30	75	45	10	4	10	2.5	2.6

◆ 储罐内壁用铝阳极

